

# SCALEMASTER®

## Water Treatment Product Guide

5th Edition



ISO 9001:2015  
ISO 14001:2015  
ISO 45001:2018



## INTRODUCTION

Scalemaster® has been a leading supplier of quality water treatment products for nearly 40 years: from the development of the first 'electrolytic' in-line scale inhibitor in 1983 (often seen as the industry standard) to heating system chemicals manufactured to the latest specifications. Throughout, we have focussed on developing technologies to support this core business. Recently, this culminated in the introduction of a portable hand-held tool for testing the real-time performance of corrosion inhibitor in a domestic central heating system which works with all chemical inhibitors – another industry first!

At the same time, we have grown our portfolio of products to cover all aspects of water treatment in both domestic and commercial applications. To compliment our traditional scale and corrosion inhibitor products we now offer a comprehensive range of water filtration, water softening, reverse osmosis and ultraviolet disinfection units, all manufactured to the highest quality to give long term protection and peace of mind. Scalemaster® products can now be found in safari parks, hotels, carwashes, dentists, vets, airports and UK restaurant and coffee shop chains in 29 different countries.

We're also doing our bit to help protect the environment. We've ensured that our water softeners are amongst the most economical and efficient on the market. We were the first company to produce a more environmentally-friendly range of premium heating system chemicals in 250ml bottles – the Scalemaster® Plus range of 250ml chemicals will still treat a full 100 litre (nominal 10 radiator) system. In 2021 we became the first company in our sector to switch to 50% recycled plastic for the bulk of our (500ml) bottle manufacture as we continue to commit to the use of materials from more sustainable sources and use local manufacturing practices which minimise impact on the environment – We are proud to be a British manufacturer, sourcing and producing 95% of all products from within the UK.

To support our staff and extended supply chains Scalemaster® achieved accreditation as a Living Wage Employer in 2021 and we adopted the Ethical Trade Initiative Base Code of Ethics, which is an internationally recognised code of good labour practice founded on the conventions of the International Labour Organisation (ILO).

I hope you find our new product guide useful, and we thank you for your continued support.



Dr Carl Jasper CEng  
Director

## THE NEED FOR WATER TREATMENT

In May 2006, for the first time, the Domestic Heating Compliance Guide (Part L of the Building Regulations) specified a requirement for the provision of some form of water treatment to prevent limescale precipitation in water heating applications in hard water areas. This was in response to findings that boilers typically lost 6% to 7% efficiency over the first few weeks of operation and up to 24% efficiency over the life of the boiler.

Subsequent guidance also specified the requirement for chemical cleansing and treatment of the water in central heating systems to prevent a reduction in heat transfer efficiency of up to 6%. The latest iteration of BS7593:2019 now requires the fitting of magnetic sludge filters, which trap sludge and maintain system efficiency.

Scalmaster® water treatment products help meet the requirements of this legislation whilst delivering savings from reduced fuel usage.

All Scalmaster® products meet current safety and performance standards where appropriate – Installers should ensure that installations comply with the local Water Supply (Water Fittings) Regulations and other relevant by-laws.



**EXTENSIVE  
STOCK**



**SPEEDY  
DELIVERY**



**EXPERT  
ADVICE**



**BRITISH  
MANUFACTURER**



## CONTENTS

4		<b>Limescale Inhibitors</b>
6		<b>Chemicals</b>
8		<b>Analysis &amp; Testing Products</b>
12		<b>Domestic Water Softeners</b>
14		<b>Professional Heating System Products</b>
16		<b>Professional Anti-Bacterial Solutions</b>
17		<b>Domestic Chemical Products</b>
18		<b>Domestic Filtration Products</b>
20		<b>Commercial Solutions</b>

Original and best! Scalemaster® Electrolytic inhibitors are the only physical 'in-line' water conditioners proven\* to extend boiler life typically by up to 50% by preventing limescale build-up in hard water areas.

*\*In independent tests carried out by Advantica (formerly part of British Gas plc).*

Make sure you fit the right product on the right job. If you're not sure, call the Technical Helpline on 07990 064096.

## MAGNETIC



**Use** - For individual appliance protection.

**Location** - Cold water mains supply pipe 1-2 metres before the appliance.

**Service** - For cold mains water applications.



### 01 15mm Magnetic Speedfit®

Code: 400105



### 02 15mm Magnetic Gold

Code: 400143

### 03 22mm Magnetic Gold

Code: 400259

## PRECAUTIONS

Speedfit® models **MUST** be installed with a run of at least 1m of copper pipe from a boiler and 450mm from a soldered joint to comply with BS5955-8 and John Guest fitting instructions.



## Scalemaster® Fact

The internal copper mesh increases contact area with the water (Scalemaster® patent) to deliver superior performance without restricting flow.



## ELECTROLYTIC



**Use** - For best performance and whole house protection.

**Location** - Cold water mains supply pipe, after stop-cock, but before the first draw off.

**Service** - For cold mains water applications.



### 04 15mm Electrolytic Speedfit®

Code: 401010



### 05 15mm Electrolytic Gold

Code: 401041

### 06 22mm Electrolytic Gold

Code: 401065

### 07 28mm Electrolytic Gold

Code: 402031



### 08 15mm Scalemaster® Mini

Code: 401096



Turn to Page 21  
for Commercial Electrolytic  
Scale Inhibitors up to 54mm

## LIMESTOP!



Salt-free limescale prevention. The easy way to eliminate & prevent scale build up 24 hours a day, 7 days a week, without the use of a water softener.

### 09 Limestop! SL8 (8 L/min)

Code: 902210

### 10 SLS8 Replacement Cartridge

Code: 902227

### 11 Limestop! SL12 (12 L/min)

Code: 902234

### 12 SLS12 Replacement Cartridge

Code: 902241

### 13 Limestop! SL15 (15 L/min)

Code: 902258

### 14 SLS15 Replacement Media

Code: 902265

## POLYPHOSPHATE



DosaPlus3 is a proportional dosing unit which can be easily retrofitted using the DosaPlus3 replacement cartridges. The unit can be installed vertically or horizontally and incorporates a bypass that allows the unit to be recharged without shutting off the main supply.

### 15 DosaPlus3

Code: 902302

### 16 Replacement Refill (Pack of 2)

Code: 902319

### 17 Replacement Refill (Pack of 12)

Code: 902326

	Speedfit®	Compression	
Pipe Diameter (mm)	15	15	22
Max Flow Rate (litres/min)	32	32	36
Fitting Type	Speedfit®	Compression	Compression
Body Material	Acetal	Copper	Copper
Length (mm)	178	170	170
Diameter (mm)	44	35	35
Earth Bonding Required	Yes	No	No
Guarantee (years)	2	3	3
Power Required	No	No	No



For the prevention of  
limescale build-up in water  
heating applications

# QUALITY THAT WORKS

The original and only 'physical' in-line limescale inhibitor proven (in independent tests) to extend boiler life-time by up to 50% by reducing limescale build-up in hard water areas.

**Proven to save energy by  
maintaining boiler efficiency.**

Beware of cheap imitations - Ask for it by name!



**BRITISH  
MANUFACTURER**

## Scalemaster® Fact

### Saving Energy!

Independent studies\* have found that energy use over the life of water heating appliances can increase by up to 24% in hard water areas as the result of limescale accumulation.

Scalemaster® Electrolytic inhibitors are the only 'physical' in-line water conditioners proven to reduce limescale build-up and extend boiler lifetime by up to 50%\*\*.

\*Study by the Battelle Institute carried out on behalf of the WQA

\*\*Independent tests carried out by Advantica (previously part of British Gas plc)



## Scalemaster® Fact

Scalemaster® 500ml bottles are manufactured in the UK using **50% recycled plastic**



## Scalemaster® Pro System Aerosols



NSF CIAS

**18 SM-Pro Inhibitor**

- Treats 120 litres
- 300 ml canister
- Box Qty - 10

Code: 500522

**19 SM-Pro Cleaner & Restorer**

- Treats 120 litres
- 300 ml canister
- Box Qty - 10

Code: 500546

**20 SM-Pro Leak Sealer**

- Treats 120 litres
- 300 ml canister
- Box Qty - 10

Code: 500560

## Scalemaster® Classic Heating System Chemicals



All Scalemaster® Classic 500ml Chemicals treat 100 litre systems and come in boxes of 12.

**21 SM-1 Inhibitor** Code: 500010

Prevents corrosion, hard water limescale precipitation and is essential for protecting hot water heating systems and maintaining operational efficiency.



NSF CIAS

**22 SM-2 De-Scaler** Code: 500119

Restores and maintains heat exchanger efficiency in hard water areas and stops boiler noise by re-dissolving limescale precipitation on heat exchanger surfaces.

**23 SM-3 System Cleaner** Code: 500218

For commissioning NEW heating systems. Removes installation foulants, flux, grease and debris suspended in water by flushing. Should be left in system min 2 hours, max 2 weeks.

**24 SM-4 Sludge Remover** Code: 500317

For the regeneration of ESTABLISHED heating systems. Removes (black) iron oxide corrosion products by flushing and restores circulation and system performance. Should be left in system min 2 hours, max 2 weeks.

**25 SM-5 Leak Sealer** Code: 500324

For the internal sealing of inaccessible leaks and weeping joints. Forms a soft seal within 24 hours. Will not cause blockages in circulatory pumps or air vents.

**26 SM-6 Heat Optimiser** Code: 500331

Improves heat transfer efficiency by up to 15% saving energy.

**27 SM-7 Biocide** Code: 500348

Prevents bacterial and fungal growth. Suitable for under-floor and heat-pump systems.

**28 SM-8 Power Cleaner** Code: 500355

For the regeneration of sludged heating systems using powered flushing equipment. Assists in the rapid removal of iron oxide corrosion products.

## Scalemaster® Plus Premium System Chemicals



250ml

Scalemaster® 250ml double concentrate heating system chemicals (items 29 – 31) will treat 100 Litres of system water.

Box Qty – 12



NSF CIAS

**29 100-I Inhibitor** Code: 500904**30 100-C Cleanser** Code: 500928**31 100-LS Leak Sealer** Code: 500942**32 Towel Rail Antifreeze (1 litre)**

Code: 508085



5 Litre

Scalemaster® 5 Litre double concentrate heating system chemicals (items 33 and 34) will treat 2000 Litres of system water.



NSF CIAS

**33 100-I Inhibitor** Code: 500980**34 100-C Cleanser** Code: 500997**35 Inhibited Antifreeze** Code: 508009**36 Over Winter Protector** Code: 508030

25 Litre

Scalemaster® Plus 25 Litre Chemicals (items 37-39). Antifreeze is concentrated – dilute to required temperature.

**37 Inhibited Antifreeze** Code: 508016**38 Over Winter Protector** Code: 508047**39 Biocide** Code: 508160

1000 Litre IBC available on request

# The perfect combination!

7



- ✓ Simple
- ✓ Accurate
- ✓ Quick
- ✓ Works with all chemical inhibitors

**Inhibitor  
Testing to  
BS7593:2019**



\*Phone not included.



**For more information on Scalemaster® i-Test® turn to pages 8-10.**

## Scalemaster® Fact

### Environmentally Friendly

Did you know...? Scalemaster® Heating System Chemicals have always been specifically formulated to deliver the high level performance demanded by modern heating systems.

All Scalemaster® Heating System Chemicals are manufactured in the UK using non-hazardous formulations, and meet the latest industry approvals.







#### 40 i-Test® Inhibitor Tester

Code: 506104

Scalemaster® i-Test® is the first system that uses your smartphone and works with all chemical inhibitors to give real-time measurement of corrosion inhibitor, on-site, in under 5 minutes.

Includes 10 single use probes.

**For annual testing in compliance with BS7593:2019**

#### 41 i-Test® Replacement Probes (Pack of 10)

Code: 506111

#### 42 i-Test® Replacement Probes (Pack of 50)

Code: 506128



**WORKS  
WITH ALL  
CHEMICAL  
INHIBITORS**



\*Phone not included.



#### 43 Heating System Water Quality Check Kit

Code: 505992

**Physical properties measured:** Colour, pH, conductivity, hardness and alkalinity (as CaCO<sub>3</sub>).

**Elements analysed:** Chloride, sulphur, sodium, potassium, molybdenum, boron, phosphorous, zinc, copper & aluminium.

#### 44 Scalemaster® Rapid Inhibitor Test

Code: 506036

Rapid check of dosing of chemical inhibitors manufactured by Scalemaster®. Gives immediate confirmation of inhibitor status. Enough for 50 system tests.

**Remember:** When using the dipstick method, not all chemical inhibitors are the same, a negative result with a dipstick does not necessarily indicate that there is no inhibitor in the system.



#### 45 Scalemaster® Water Hardness Test Strips

Code: 901008

For measurement of the Total Hardness of water.

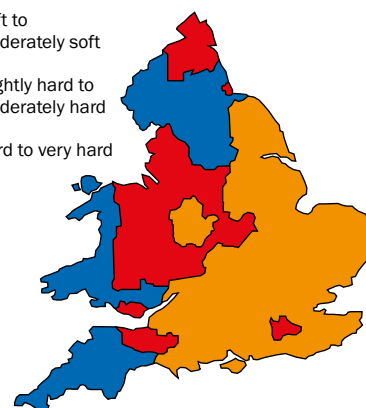
Helps in assessing the need for water treatment to prevent scale when upgrading or installing new water heating equipment in domestic premises.

Can be used when installing a water softener to check hardness before and after installation.

Pack contains 6 Test Strips.



- Soft to moderately soft
- Slightly hard to moderately hard
- Hard to very hard





# i-TEST

BY **SCALEMASTER®**

9

Works with  
all chemical  
inhibitors



\*Phone not included.

**Real-time measurement of corrosion inhibitor protection, on-site, in under 5 minutes!**

(For annual testing compliance with BS7593:2019)



## Are you British Standard Compliant?

Poor water quality is the most common root cause of central heating breakdowns. It is now a requirement of BS7593:2019 to carry out an annual check of heating system water quality as part of the system maintenance programme.

## What is BS7593:2019 and why is it important?

BS7593:2019 is the British Standard code of practice for the preparation, commissioning and maintenance of domestic central heating and cooling water systems. It applies to individual domestic properties when commissioning a new system for the first time, re-commissioning following the installation of a new boiler, or any other major remedial work on the heating system.

The latest iteration, (BS7593:2019) came into effect on 31 May 2019. Compliance is a regulatory requirement within Part L of Building Regulations and includes carrying out a check on inhibitor level to prevent corrosion.

## Scalemaster® i-Test® - Inhibitor Tester

Scalemaster® i-Test® provides a revolutionary way to check if the heating system water is healthy and there is sufficient active inhibitor present to provide adequate protection against corrosion on metals typically in a system. It doesn't just check if there is some chemical in the water - It provides a real-time measurement of corrosion protection provided in reference to the target performance levels of the NSF CIAS tests.

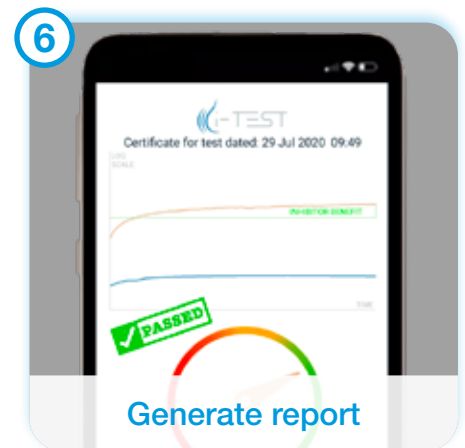
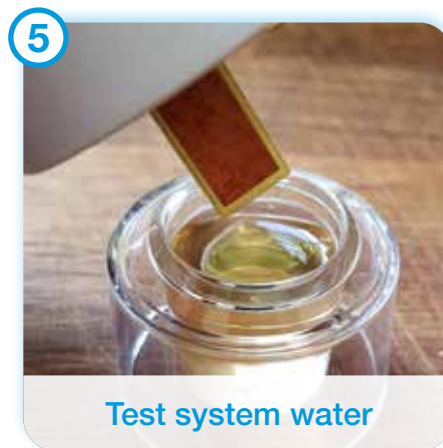
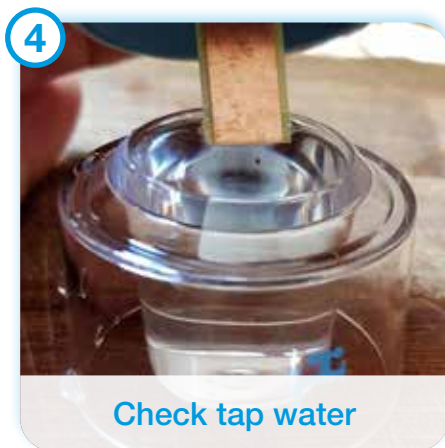
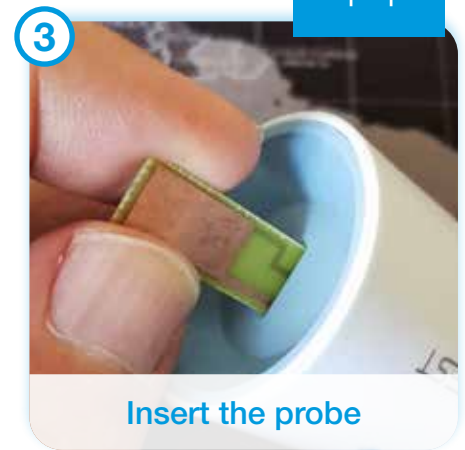
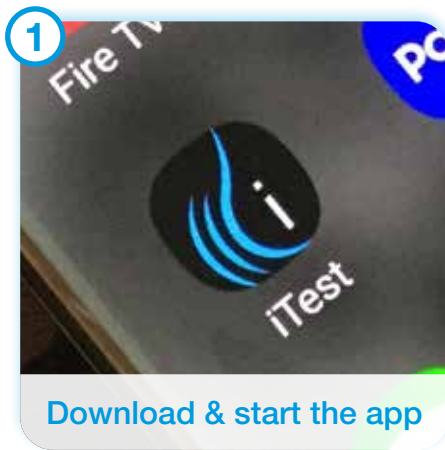
Unlike single dipstick tests, i-Test® will show:

- The level of corrosion protection provided by any inhibitor present
- If there are any other chemicals (such as system cleaner) or flux residues present working against the inhibitor to increase corrosion
- If the corrosion in a system is actually worse than in the tap water used to fill it!

## Test Methodology

i-Test works by measuring the corrosion between two different metals (iron and copper) suspended in a small sample of system water. The signalling unit sends data to a free-to-download App on your smartphone which decodes and processes the data to generate a report which can immediately be sent to the customer or printed on a local printer.





Download the instructions and watch the video at [www.i-test.com](http://www.i-test.com) or [www.scalemaster.co.uk](http://www.scalemaster.co.uk)

## Revolutionary Water Testing!

Scalemaster® i-Test® provides the greatest confidence of the performance of an inhibitor in a heating system through direct measurement of the level of corrosion protection being afforded.

## Limitations of Other Inhibitor Test Methods

**Dip-test strips** usually detect the presence of an element or constituent of an inhibitor via a colour change (compared with colours on a table) from which the concentration of the inhibitor is inferred. Test strips can be susceptible to interference from other chemicals present (particularly in system cleaners) and strips from different inhibitor manufacturers do not work with all brands of inhibitor – If the dip test strip you use cannot detect Scalemaster NSF CIAS approved inhibitor in a system it's not the inhibitor that's faulty!

**Drop count titration tests** (drop test kits) use droplets added to a system water sample until a colour change indicates the level of a particular element or constituent. Some require the addition of other reagents (often more aggressive chemicals to release oxidised metals). They are only suitable for detecting chemical inhibitors which contain the target constituent and do not work with all inhibitors.

**Laboratory analysis** of a system water sample provides an accurate account of the constituent elements and compounds present but the sample must be sent away and the report generated by an expert who can accurately interpret the results. Accredited analytic laboratories must maintain accuracy through testing against prepared standards - testing tends to be expensive relative to cost of the chemicals added to a system. Any remedial work required will have to be carried out at a further visit.



**46 SL150 Mini**  
Code: 900148



**47 SL150 Standard**  
Code: 900100

**48 SL150 Hi-Flo**  
Code: 900131



**49 SL450 Hi-Flo**  
Code: 900117



**51 SL100 Plus**  
Code: 900247

**52 SL200 Plus**  
Code: 900254

## NEW - Electric Twin Tank with Remote Control

**50 Softline® SL Twin E (with remote)** Code: 900261

- ✓ Next Generation Water Softening
- ✓ Compact Design
- ✓ Soft Touch Digital Control
- ✓ No Hard Water 'Downtime'
- ✓ 24hr Soft Water



	Product	Product Code	Electric Req	People	Height	Depth	Width	Regen Time (Approx mins)	Resin Volume (Ultra Fine)	Salt Used (Per Regen)	Water Used (Per Regen)	Inlet & Outlet	Drain & Overflow	Comes With	High Flow Option	Max Ambient Temp	Max / Min Working Pressure
46	SL150 Mini	900148	No	Up to 5	470	360	200	14	3.3	0.33	18	3/4" BSP	1/2"	2 x 15mm Hoses	No	40° C	6/1 Bar
47	SL150 Standard	900100	No	Up to 5	470	485	240	14	3.3	0.33	18	3/4" BSP	1/2"	2 x 15mm Hoses	-	40° C	6/1 Bar
48	SL150 Hi-Flo	900131	No	Up to 5	470	485	240	14	3.3	0.33	18	3/4" BSP	1/2"	2 x 22mm Hoses	-	40° C	6/1 Bar
49	SL450 Hi-Flo	900117	No	Up to 11	573	503	330	25	9.0	0.66	24	3/4" BSP	1/2"	2 x 22mm Hoses	Yes	40° C	6/1 Bar
50	SL Twin E	900261	Yes	Up to 5	460	465	260	45	2 x 3.5	0.53	37	3/4" BSP	1/2"	Remote	No	40° C	6/1 Bar
51	SL100 Plus	900247	Yes	Up to 5	570	440	320	45	10	1.40	53	3/4" BSP	1/2"	-	Yes	40° C	6/1 Bar
52	SL200 Plus	900254	Yes	Up to 11	570	440	320	45	15	2.10	53	3/4" BSP	1/2"	-	Yes	40° C	6/1 Bar

## Water Softener Installation Kits



**53 15mm Standard Installation Kit**  
Code: 900803



**54 22mm Hi-Flow Hoses (x2)**  
Code: 900858



**55 Combi Installation Kit**  
Code: 900827

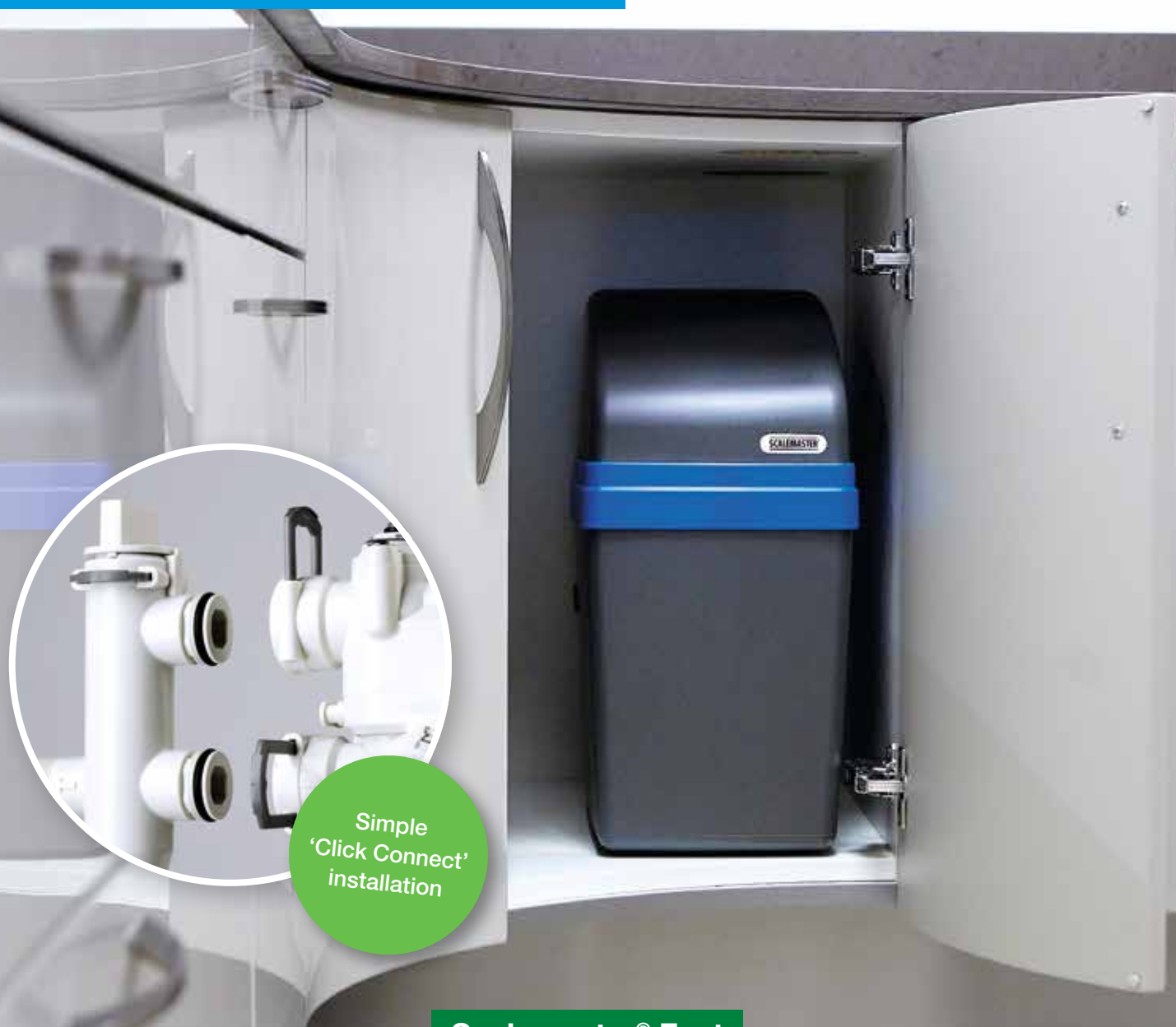


**56 22mm Hi-Flow Installation Kit**  
Code: 900810

**For commercial systems call now on 01785 811636 to arrange a site visit.**



For the elimination of problems associated with limescale in hard water areas



### Scalemaster® Fact

## Reliable and economical!

All Scalemaster® domestic water softeners come with a full 5 year parts and 2 year labour warranty for peace of mind.

**CARBON NEUTRAL** - Scalemaster® SL150 and SL450 non-electric water softeners use less than 4% water for the regeneration cycle making them carbon neutral (as defined in the 'Code for Sustainable Homes').



## Non-Chemical Corrosion Protection

Oxygen plays a central role in the corrosion of central heating systems, entering in the form of dissolved oxygen via tap water used for filling. As fire dies upon the removal of oxygen so the corrosion process also ceases.

Corrosion Master significantly retards the corrosion process by raising the pH and restricting the amount of dissolved oxygen in the water. Once the dissolved oxygen has been eliminated the unit shuts down to be automatically reactivated upon the introduction of fresh oxygenated water. Additionally Zinc species that polarise existing corrosion cells are released into the water.

**Product Life:** The CM5 and CM10 are designed to continue working unattended for 5 and 10 years respectively and are supplied with an installation date label.



### 57 22mm Corrosion Master CM5

Code: 600307

### 58 22mm Corrosion Master CM10

Code: 600017

### 59 28mm Corrosion Master CM10

Code: 600604

	600307	600017	600604	Warranty
Length (mm)	135	170	280	2 Years
Diameter (mm)	35	42	42	2 Years
Flow Rate (L/Min)	36	36	42	2 Years

### 60 Duo Defence Pack

Code: 600109

The Duo Defence pack contains two physical inhibitors, one to help reduce scale build up within the boiler, the other to provide protection against corrosion occurring in the heating circuit. Both products act to provide an excellent barrier against the hidden perils affecting a central heating system.



## Heating System Filters & Part L Compliance Packs

**Application:** A safe, effective and easy solution for removing suspended black iron oxide (magnetite) from the heating system, maintaining efficiency and performance and extending component lifespan.



### 61 i-Mag360

Code: 601403

### 62 i-Mag360 Hard Water Pack

Code: 601427

Contains

- 1 x 22mm Scalesmaster® i-Mag 360 System Filter
- 1 x 250ml NSF CIAS Inhibitor (treats 100 litres)
- 1 x 250ml Cleanser (treats 100 litres)
- 1 x 15mm Electrolytic Scale Inhibitor



### 63 i-Mag360 Soft Water Pack

Code: 601410

Contains

- 1 x 22mm Scalesmaster® i-Mag 360 System Filter
- 1 x 250ml NSF CIAS Inhibitor (treats 100 litres)
- 1 x 250ml Cleanser (treats 100 litres)



### 64 i-Mag Pro

Code: 601007

All stainless steel, commercial grade construction with double seal for extra security and long term reliability. (Patents applied for, product has registered design).

- 5 Year warranty
- Stainless steel construction
- Sludge capacity 280 grams
- Simple to install and maintain
- Can be used as an accurate dosing point for Scalesmaster® 250ml Heating System chemicals
- Double seal for extra peace of mind and reliability
- Improves boiler efficiency and lifespan
- Effective sludge removal on first pass





## 65 Masterflux (250g)

Code: 700021

Flux soldering paste suitable for all gas and water capillary joint applications. WRAS approved for use on hot and cold water pipework, including potable water systems. Heat activated, Self-cleaning, pH neutral, chloride free.



## 66 External Leak Sealer (50g)

Code: 500843

For central heating systems. For sealing small leaks on all types of joints and fittings. Ideal for temporary repairs. Cures in 1 hour.

**Precautions:** Not suitable for use with bitumen or felt. Avoid contact with chrome-plated and gold-plated decorative fittings.



## Condense Neutralisers

For neutralising acidic flue gas condensate discharging from high efficiency boilers.



## 67 Domestic CondenseMaster

Code: 600703



**Application:** Suitable for all domestic condensing boilers up to 35kW.  
**Product Life:** 12 Months (may be reduced where condensate is highly acidic).

**Fitting Location:** Install vertically in plastic pipework carrying condensate from boiler waste water drain.

**Fitting Type:** 22mm Speedfit®.

**Working Media:** Calcined CaCO<sub>2</sub> / MgOH.

**Size:** 238mm x 42mm

**Body Material:** ABS

**Precautions:** DO NOT allow to freeze.

## 68 Commercial CondenseMaster ¾" Ports

Code: 600765

## 69 Commercial CondenseMaster 1" Ports

Code: 600772

**Application:** Suitable for all condensing boilers up to 100kW. Will treat up to 10-12 litres/hour of acidic condensate produced by condensing boilers.

**Product Life:** 12 Months (may be reduced where condensate is highly acidic).

**Fitting Location:** Fitted into the drain line

**Fitting Type:** ¾"

**Size:** 315mm (H) x 133mm (W)

**Body Material:** Pure Polypropylene

**Precautions:** DO NOT allow to freeze.

## 70 Replacement Cartridge (for items 68 and 69)

Code: 600789





**Scalemaster® Alcohol Free Foaming Hand Sanitiser**

Kills bacteria and viruses & provides ongoing protection against infection without drying the skin.  
Manufactured in the UK.



**71 Foaming Hand Sanitiser 50ml Personal Pocket Size** Code: 508481

**72 Foaming Hand Sanitiser 5 Litre Refill for 508481, 508504 & 508511** Code: 508405

**73 Wall Mounted Hand Sanitiser Dispenser** Code: 508504

**74 Wall Mounted Touch Free Hand Sanitiser Dispenser** Code: 508528

**75 Wall Mounted Hand Sanitiser Dispenser + 5 Litre Refill** Code: 508511

**76 Wall Mounted Touch Free Hand Sanitiser Dispenser + 5 Litre Refill** Code: 508535

**Scalemaster® Professional Multi-Surface Cleaner**

**77 Professional Multi-Surface Cleaner 500ml**

Code: 508443

- Trigger Spray
- Kills 99.9% of bacteria & viruses
- Conforms to BS EN 1276, 1650, 13697, 14476
- Manufactured in the UK

**78 Professional Multi-Surface Cleaner 5 Litre**

Code: 508436

Refill for 500ml spray bottle code: 508443 and all types of spray bottles.



**79 Sterilising / Disinfectant Fluid 1 Litre**

Code: 508498

Scalemaster® Sterilising fluid is a highly effective sterilising/disinfectant fluid for treating stored water in domestic & commercial applications. Easy to use, with no need to neutralise, simply flush out the system once the disinfection is complete.

- Comes with 10 test strips
- Effective against Legionella & Pseudomonas, Bacteria & Algae
- Penetrates & removes biofilms
- Non foaming formulation - safe & effective



## Scalemaster® Eco Chemicals

A range of chemicals designed for domestic use that are environmentally friendly and safe to use in the home.



### 80 Enzyme-Based Sink & Drain Unblocker

Code: 507026

An effective enzyme-based treatment for breaking down organic debris and unblocking sinks & drains. 750ml

- Non-acidic
- Non-caustic
- Non-bleach
- Biodegradable

### 81 Enzyme-Based Drain & Toilet Cleaner

Code: 507033

An effective enzyme-based treatment to clean & eliminate unwanted odours. 1 ltr

- Non-acidic
- Non-caustic
- Non-bleach
- Biodegradable

### 82 General Purpose Descaler

Code: 507019

A multi-purpose, rapid action de-scaler. 250ml

- Biodegradable
- Phosphate-free

## Scalemaster® Softline® Bathroom Products

A range of gentler, more environmentally friendly bathroom cleaning chemical sprays.

### 83 Mould & Mildew Remover

Code: 507125

Kills & removes black mould and mildew. Leaves showers and sinks looking clean and fresh.

### 84 Bathroom Limescale Remover

Code: 507101

Removes Limescale and associated watermarks. Leaves showers with a brilliant shine.

### 85 After Shower Cleaner

Code: 507118

Gently cleans and helps prevent the build up of soap scum and limescale. Leaves showers with a longer lasting shine.

### 86 Sparkle & Shine Triple Pack

Code: 507132

Contains:

- 1 x Mould & Mildew Remover
- 1 x Limescale Remover
- 1 x After Shower Cleaner

Comes in a presentation box.



## Softline® Domestic Filter Housings

**87 10" Filter Housing**

- ¾" Ports

Code: 901107

**88 10" Filter Housing**

- ¼" Ports

Code: 901206

**89 10" Duplex Filter Housing**

- ¾" Ports

Code: 901220

## Softline® Domestic Drinking Water Filter Kits

**90 Crystal Drinking Water Kit**

- Includes taste & odour filter
- Includes 901268 touchtap

Code: 901169

**91 Crystal + Drinking Water Kit**

- Twist Connect System
- Includes taste & odour filter
- Includes 901268 touchtap

Code: 901183

**92 10" Housing Drinking Water Kit**

- Includes 10" Carbon Block Filter
- Includes 901268 touchtap

Code: 901213



## Softline® domestic replacement 10", Crystal and Crystal+ filters

**SEDIMENT 10" CARTRIDGES****93 0.3 Micron**

- 12 month life

Code: 901237

**94 5 Micron**

- 12 month life

Code: 901244

**95 25 Micron**

- 12 month life

Code: 901251

**96 Carbon Block**

- 6 month life
- Capacity 20,000 litres

Code: 901114

**97 GAC/Phosphate**

- 12 month life
- Capacity 20,000 litres

Code: 901121

**98 Ceramic**

Code: 901138

**99 Crystal**

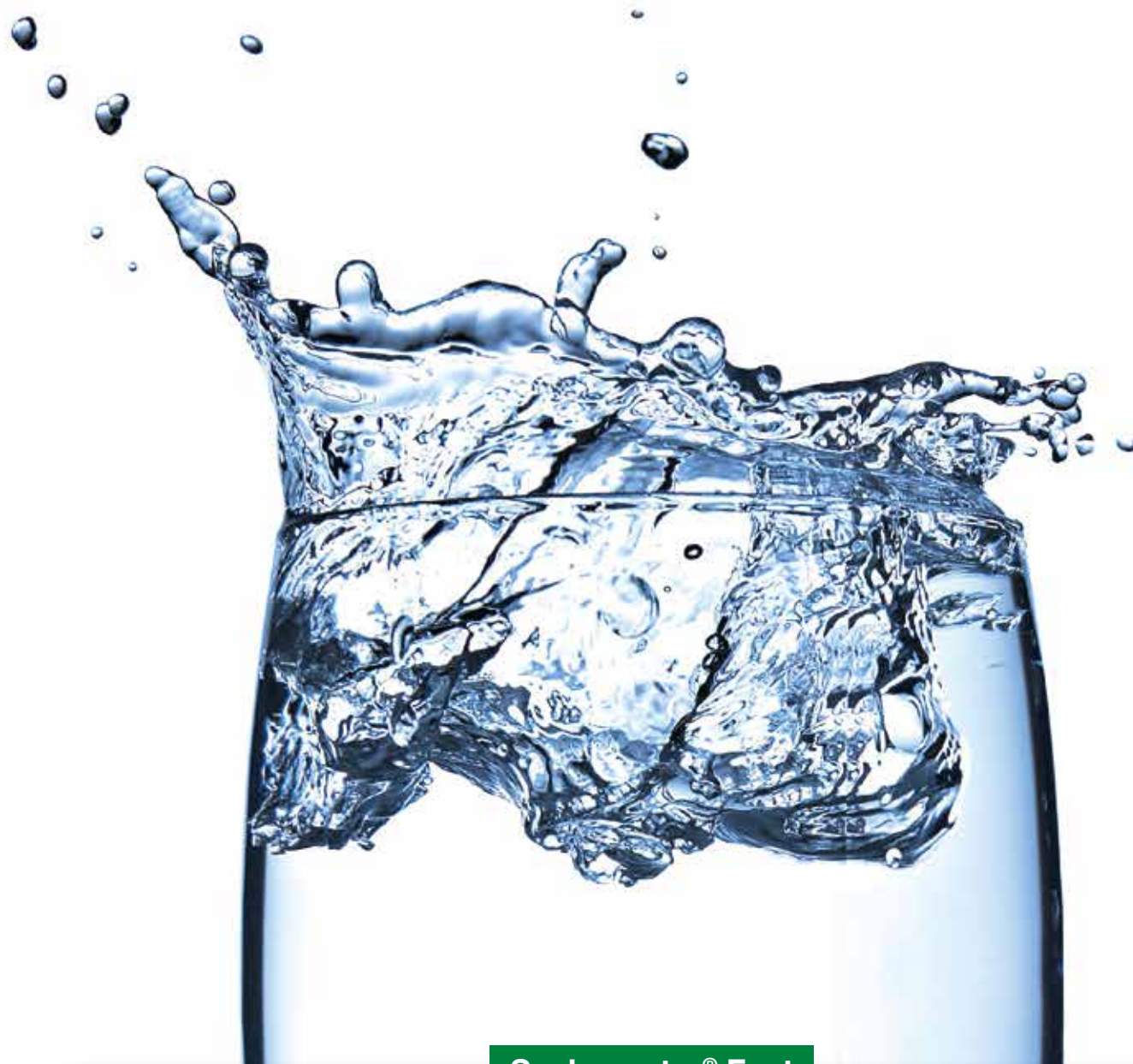
Code: 901176

**100 Crystal +**

Code: 901190

		Bad Taste Removal	Chlorine Removal	Scale Removal	Sediment Removal	Scum Removal	Lead Reduction	Bacteria Removal	Cyst Removal	Organic Chemical Removal	Pesticide Removal
<b>93/94/95</b>	Sediment				•						
<b>96</b>	Carbon Block	•	•		•					•	•
<b>97</b>	GAC/Phosphate	•	•	•	•	•				•	•
<b>98</b>	Ceramic							•	•	•	•
<b>99</b>	Crystal	•	•	•	•						
<b>100</b>	Crystal +	•	•	•	•						

To improve the taste and  
odour of your drinking water



### Scalemaster® Fact

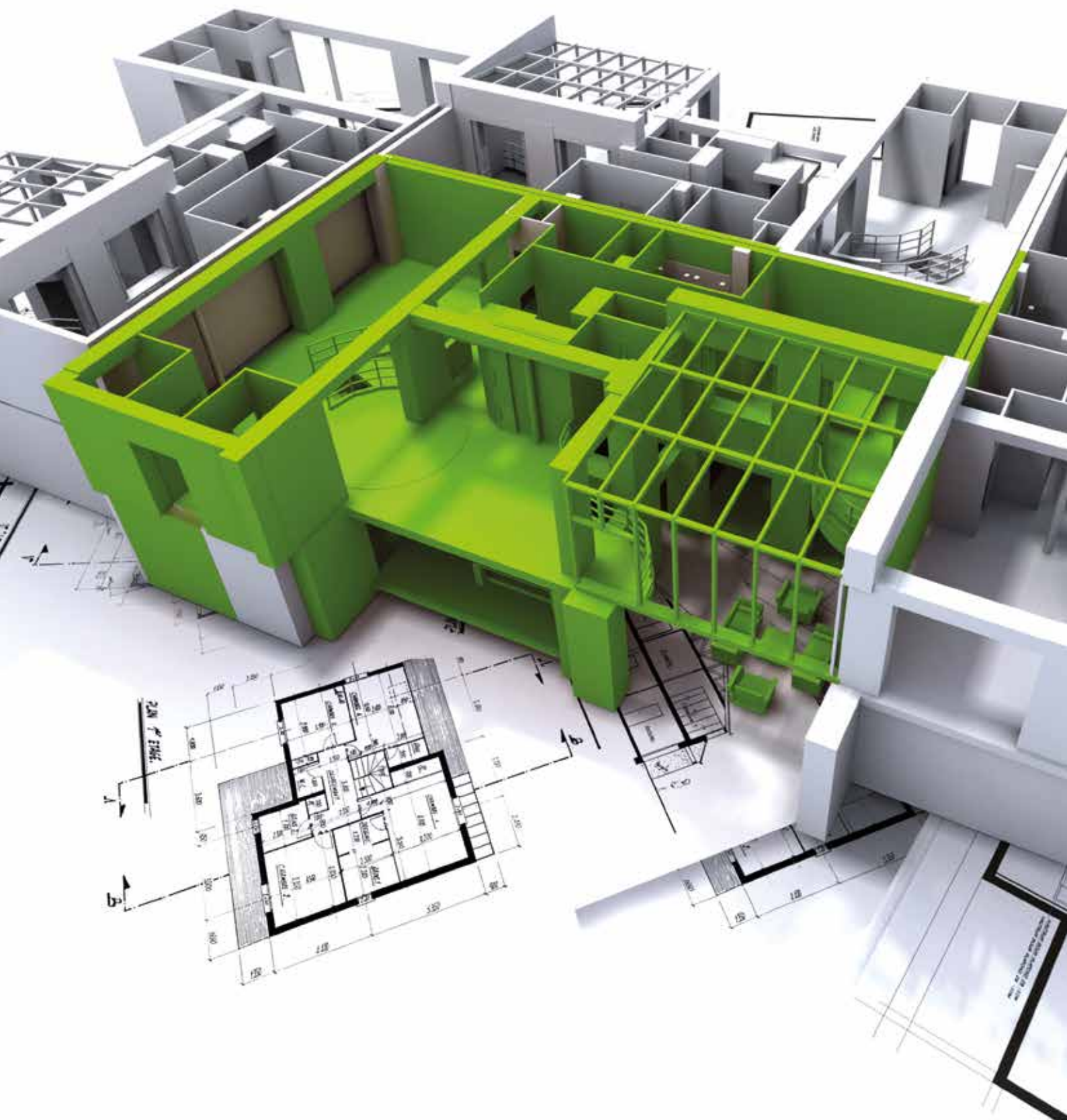
#### Good For Health!

Water is essential for health and maintaining good hydration is increasingly being recognised as important for mental and physical performance. Filtering tap water is generally considered beneficial if it makes you feel more positive about drinking it!\*

\*See [ukwta.org/technology-areas/filters-membranes/](http://ukwta.org/technology-areas/filters-membranes/) for more information









## Commercial Scale Inhibitors

When hard water is heated to temperatures above 40°C, the temporary hardness present begins to precipitate as limescale. Scalemaster® Electrolytic products operate as a galvanic cell increasing the concentration of dissolved zinc in the water. This has the effect of suppressing scale formation and forcing the limescale crystals which form, to have a needle-like structure (Aragonite), rather than form as more normal, smaller cubic (Calcite) crystals. It is more difficult for Aragonite to adhere to surfaces and the precipitating scale is washed away by the water flow.



**07 28mm Electrolytic (see also page 4)**  
Code: 402031



**101 35mm Electrolytic**  
Code: 402048



**102 42mm Electrolytic**  
Code: 402055



**103 54mm Electrolytic**  
Code: 402062

	Product	Code	Pipe Diameter (mm)	Max Flow Rate (litres/minute)	Fitting Type	Body Material	Length (mm)	Diameter (mm)	Earth Bonding Required	Guarantee (years)	Power Required
<b>07</b>	28mm Electrolytic	402031	28	42	Compression	Copper	276	42	No	3	No
<b>101</b>	35mm Electrolytic	402048	35	79	Solder	Copper	262	108	No	3	No
<b>102</b>	42mm Electrolytic	402055	42	95	Solder	Copper	262	108	No	3	No
<b>103</b>	54mm Electrolytic	402062	54	250	Solder	Copper	360	108	No	3	No

## Suprion®

**Suprion® needs no electricity, uses no chemicals and contains no magnets. A water conditioning product that is ecologically compatible with the needs of our world today.**



**Suprion®** employs a unique form of electrolytic action. In a standard electrolytic system the water passing through the device functions as the electrolyte in a voltaic cell, contacting at least two electrodes having different electrochemical potentials. **Suprion®** is unique in that there is no contact between the water and the electrodes. An electrostatic field generated by the flow of water through the device mediates the electrolytic action. Optimum field generation is made possible by a specially formed tough, temperature resistant plastic tube through which the water flows. **Available in sizes up to 18" Pipework.**



All commercial systems are different - Call the technical helpline 07990 064096 for help in choosing the correct system.

## Commercial Water Softeners

When considering water softeners in the commercial environment it's important to know the fact. Hard water costs public and private sector organisations £millions each year in;

- Higher maintenance costs
- Premature replacement of equipment, appliances and machinery
- Replacement of linens, towels and other laundry
- Higher energy and heating bills

To help save cost, time and energy Scalemaster® Commercial Water Softeners are widely used in commercial applications such as;

- Hotels and guest houses
- Restaurants, cafes, pubs and bars
- Hospitals, dental surgeries and health centres
- Health clubs, swimming pools and leisure centres
- Office and apartment blocks



## Reverse Osmosis



Water purification by reverse osmosis is a simple and straightforward process. Water pressure pushes the tap water through a semi-permeable membrane to remove contaminants from the water. This is a process in which dissolved inorganic solids are removed from a solution. Reverse Osmosis is different from standard filtration where impurities are collected within the filter media. The reverse osmosis process pushes water through a series of filters and ultimately the clean water goes to a holding tank with the contaminants flushed to the drain.

**A list of contaminants and the percentage of them that is removed**

Aluminium	97-98	Chromate	90-98	Phosphate	99+	Zinc	98-99
Ammonium	85-95	Chromium	96-98	Potassium	92	Boron	50-70
Arsenic	94-96	Copper	97-99	Radioactivity	95-98	Borate	30-50
Magnesium	96-98	Fluoride	94-96	Radium	97	Mercury	96-98
Bicarbonate	95-96	Iron	98-99	Selenium	97	Bacteria	99+
Bromide	93-96	Lead	96-98	Silica	85-90	Virus	99+
Cadmium	96-98	Mangan	96-98	Silver	95-97		
Calcium	96-98	Nickel	97-99	Sodium	92-98		
Chloride	94-95	Nitrate	96-96	Sulphate	99+		

All commercial systems are different - Call the technical helpline 07990 064096 for help in choosing the correct system.

## Ultra Violet Water Disinfection Systems

UV Disinfection technology is widely used around the world to ensure safe water, free from bacteria, without the use of chlorine or other chemicals thereby eliminating the risk of overdosing or imparting bad taste.

The Scalemaster® range of UV systems all utilise low pressure mercury vapour discharge lamps to produce UV light at 254nm wavelength (UVC) which is lethal to micro-organisms. The stainless steel chamber incorporates a high purity quartz sleeve around the lamp. As water passes through the chamber, UVC light penetrates and destroys the cell structure of micro-organisms in the water.

Installation is simple. Once fitted the system requires only periodic attention to clean or replace the ultra-violet tube. Due to efficient design and the use of high quality components, running costs are extremely low and the lamp only requires annual replacement. The chamber is manufactured from hygienic 316L grade stainless steel ensuring strength, reliability and efficient water flow.

**A Typical UV is designed to produce 30 to 40 mJ/cm<sup>2</sup> of energy. Below is a list of micro organisms and the dose required to kill.**

Microorganism	99.99% reduction (Log 4)
Cryptosporidium parvum	7,9
Giardia lamblia (cisti)	<10
Vibrio Cholerae	2,9
Shigella dysenteriae	3
Shigella Sonnei	8,2
Escherichia coli O157:H7	5,6
Salmonella typhi	8,2
Salmonella typhimurium	9
Salmonella enteritidis	10
Legionella pneumophila	9.4
Virus epatite	16–30
Polovirus tipo	21–30
Coxsackie virus B5	30
Rotovirus SA11	31–36
Aeromonas hydrophila	5
Campylobacter jejuni	4,6
Staphylococcus aureus	1,4
Yersinia enterocolitica	4,6
Clostridium perfringens	200



All commercial systems are different - Call the technical helpline 07990 064096 for help in choosing the correct system.



Scalemaster®, Softline®, i-Mag® and i-Test® are registered trademarks of Scalemaster Limited

Emerald Way, Stone Business Park,  
Stone, Staffordshire, ST15 0SR, England

Tel: +44(0) 1785 811636 Fax: +44(0) 1785 811511

**Technical Helpline: 07990 064096**

[info@scalemaster.co.uk](mailto:info@scalemaster.co.uk) [www.scalemaster.co.uk](http://www.scalemaster.co.uk)

 ScalemasterH20  @ScalemasterH20